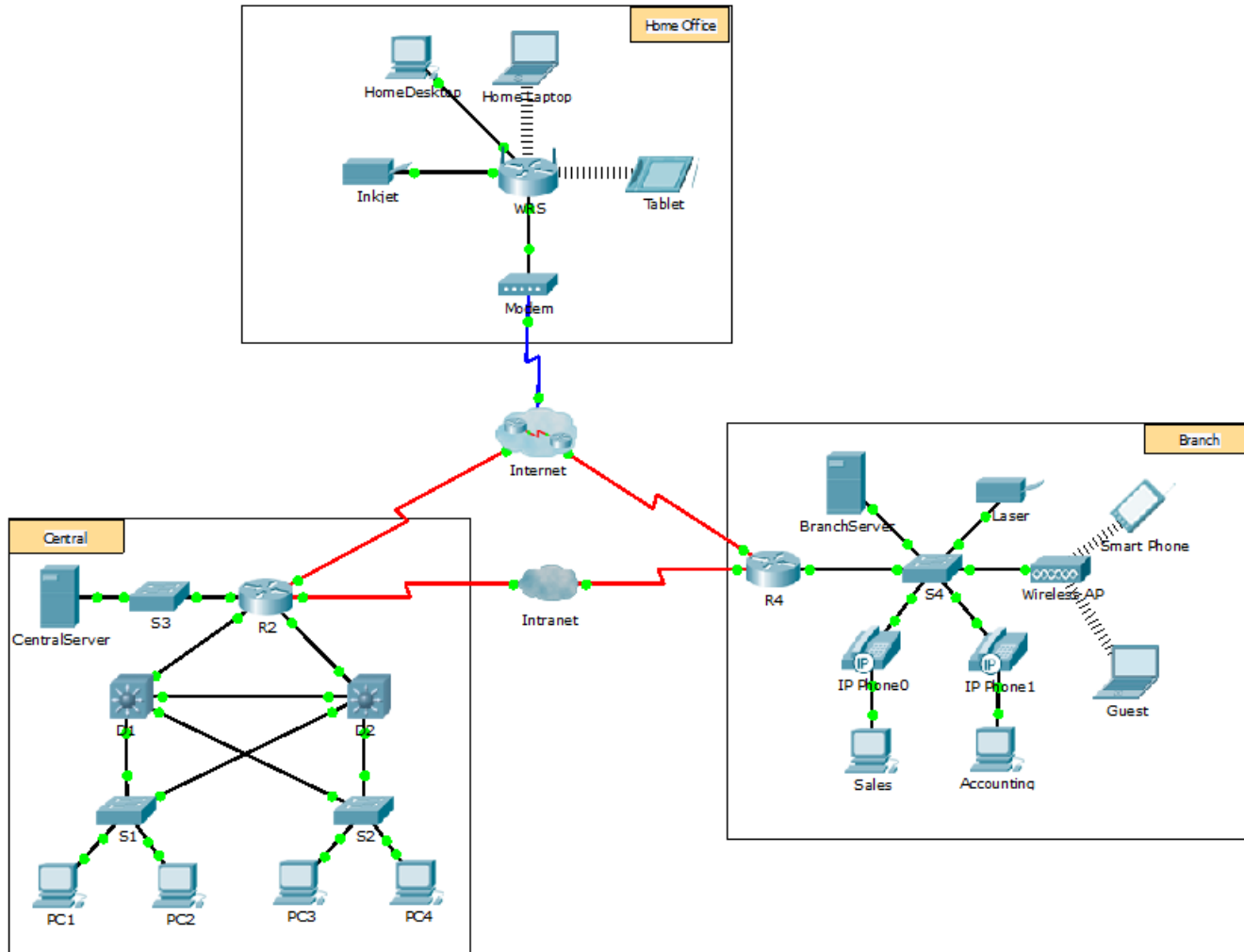


# Packet Tracer - Web and Email Servers

## Topology



## Objectives

**Part 1: Configure and Verify Web Services**

**Part 2: Configure and Verify Email Services**

## Background

In this activity, you will configure HTTP and email services using the simulated server in Packet Tracer. You will then configure clients to access the HTTP and email services.

**Note:** Packet Tracer only simulates the process for configuring these services. HTTP and email software packages each have their own unique installation and configuration instructions.

## Part 1: Configure and Verify Web Services

### Step 1: Configure web services on CentralServer and BranchServer.

- a. Click **CentralServer** and click the **Config** tab > **HTTP**.
- b. Click **On** to enable HTTP and HTTP Secure (HTTPS).
- c. Optional. Personalize the HTML code.
- d. Repeat Step1a – 1c on **BranchServer**.

### Step 2: Verify the web servers by accessing the web pages.

There are many endpoint devices in this network, but for the purposes of this step, use **PC3**.

- a. Click **PC3** and click the **Desktop** tab > **Web Browser**.
- b. In the URL box, enter **10.10.10.2** as the IP address and click **Go**. The **CentralServer** website displays.
- c. In the URL box, enter **64.100.200.1** as the IP address and click **Go**. The **BranchServer** website displays.
- d. In the URL box, enter **centralserver.pt.pka** and click **Go**. The **CentralServer** website displays.
- e. In the URL box, enter **branchserver.pt.pka** and click **Go**. The **BranchServer** website displays.
- f. What protocol is translating the **centralserver.pt.pka** and **branchserver.pt.pka** names to IP addresses?

## Part 2: Configure and Verify Email Services on Servers

### Step 1: Configure CentralServer to send (SMTP) and receive (POP3) Email.

- a. Click **CentralServer**, and then select the **Config** tab followed by the **EMAIL** button.
- b. Click **On** to enable the SMTP and POP3.
- c. Set the domain name to **centralserver.pt.pka** and click **Set**.
- d. Create a user named **central-user** with password **cisco**. Click **+** to add the user.

### Step 2: Configure BranchServer to send (SMTP) and receive (POP3) Email.

- a. Click **BranchServer** and click the **Config** tab > **EMAIL**.
- b. Click **On** to enable SMTP and POP3 .
- c. Set the domain name to **branchserver.pt.pka** and click **Set**.
- d. Create a user named **branch-user** with password **cisco**. Click **+** to add the user.

### Step 3: Configure PC3 to use the CentralServer email service.

- a. Click **PC3** and click the **Desktop** tab > **E Mail**.
- b. Enter the following values into their respective fields:
  - 1) Your Name: **Central User**
  - 2) Email Address: **central-user@centralserver.pt.pka**
  - 3) Incoming Mail Server: **10.10.10.2**
  - 4) Outgoing Mail Server: **10.10.10.2**

- 5) User Name: **central-user**
- 6) Password: **cisco**
- c. Click **Save**. The Mail Browser window displays.
- d. Click **Receive**. If everything has been set up correctly on both the client and server, the Mail Browser window displays the `Receive Mail Success` message confirmation.

### Step 4: Configure Sales to use the Email service of BranchServer.

- a. Click **Sales** and click the **Desktop** tab > **E Mail**.
- b. Enter the following values into their respective fields:
  - 1) Your Name: **Branch User**
  - 2) Email Address: **branch-user@branchserver.pt.pka**
  - 3) Incoming Mail Server: **172.16.0.3**
  - 4) Outgoing Mail Server: **172.16.0.3**
  - 5) User Name: **branch-user**
  - 6) Password: **cisco**
- c. Click **Save**. The Mail Browser window displays.
- d. Click **Receive**. If everything has been set up correctly on both the client and server, the Mail Browser window displays the `Receive Mail Success` message confirmation.
- e. The activity should be 100% complete. Do not close the Sales configuration window or the Mail Browser window.

### Step 5: Send an Email from the Sales client and the PC3 client.

- a. From the **Sales Mail Browser** window, click **Compose**.
- b. Enter the following values into their respective fields:
  - 1) To: **central-user@centralserver.pt.pka**
  - 2) Subject: *Personalize the subject line.*
  - 3) **Email Body**: *Personalize the email.*
- c. Click **Send**.
- d. Verify that **PC3** received the email. Click **PC3**. If the Mail Browser window is closed, click **E Mail**.
- e. Click **Receive**. An email from Sales displays. Double-click the email.
- f. Click **Reply**, personalize a response, and click **Send**.
- g. Verify that **Sales** received the reply.