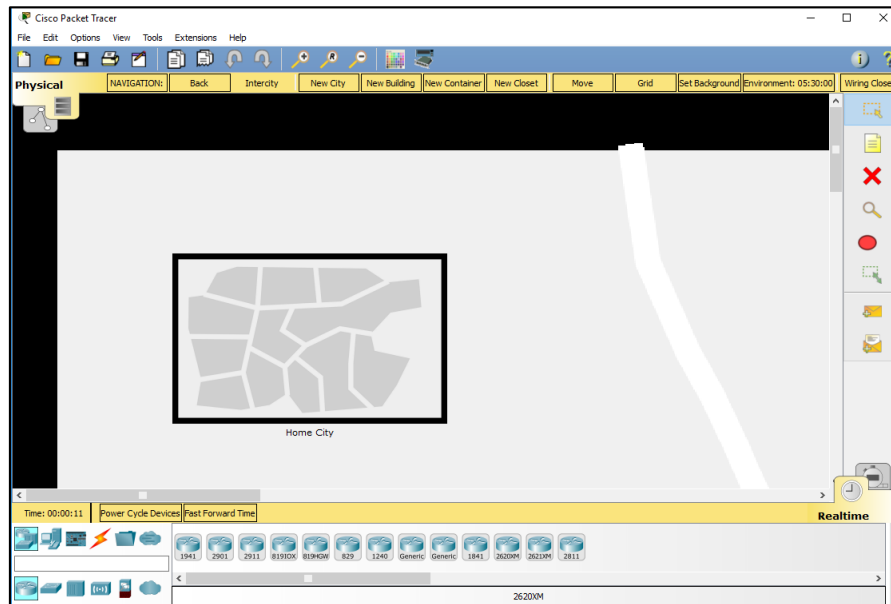


# Packet Tracer - Packet Tracer Physical View



## Objectives

- Step 1 - Open the Physical View of Packet Tracer**
- Step 2 - Apply a Physical View Background Image**
- Step 3 - Edit and Move Between Containers**
- Step 4 - Add Devices to a Wiring Closet**
- Step 5 - Experiment**

## Background / Scenario

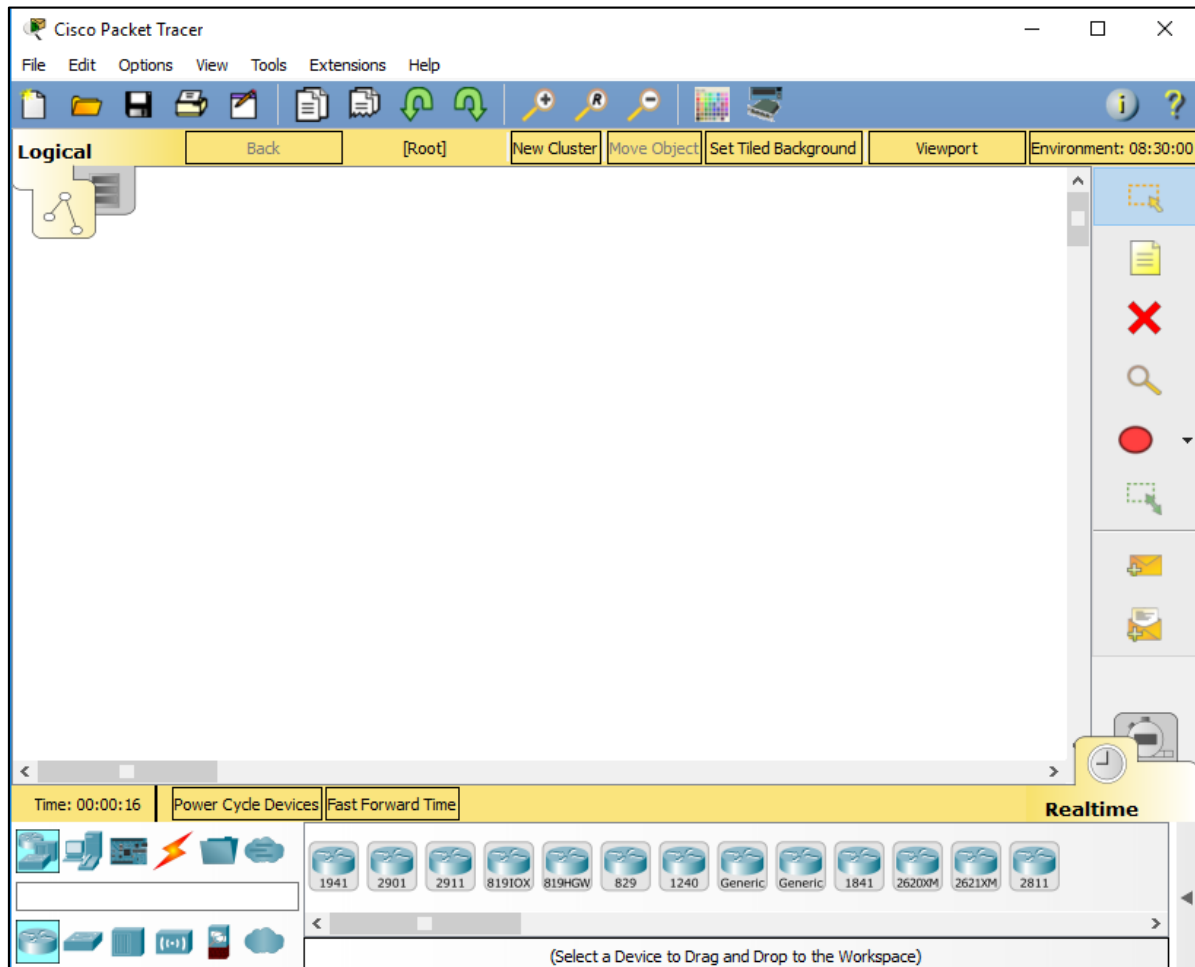
In this activity, you will use the Physical view of Packet Tracer to add backgrounds, containers, and network devices.

### Step 1: Open the Physical View of Packet Tracer

- a. Launch Packet Tracer.

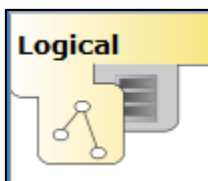
## Packet Tracer – The Physical View

When Packet Tracer opens, the default view is the Logical view.

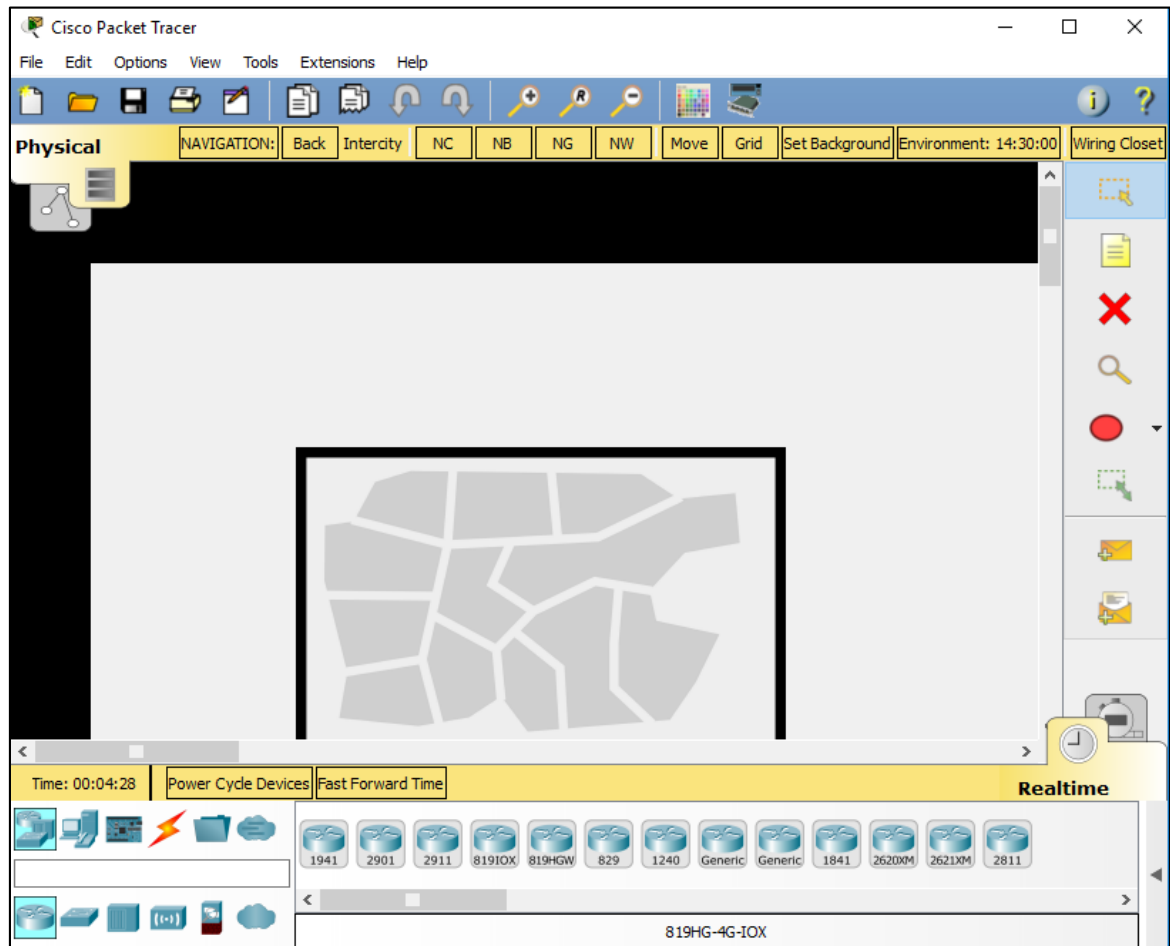


b. Change to the Physical view.

Click the Physical view button to change to the Physical view. The Physical view button is behind the Logical view button in the top left portion of the workspace.



The default Physical view is the Intercity.



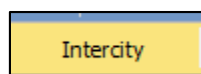
### Step 2: Apply a Physical View Background Image

- a. Download the estate image from pixabay.

Navigate to the pixabay web site at <https://pixabay.com> and type **world map** into the All images search window. Click a map image in the result and save the image.

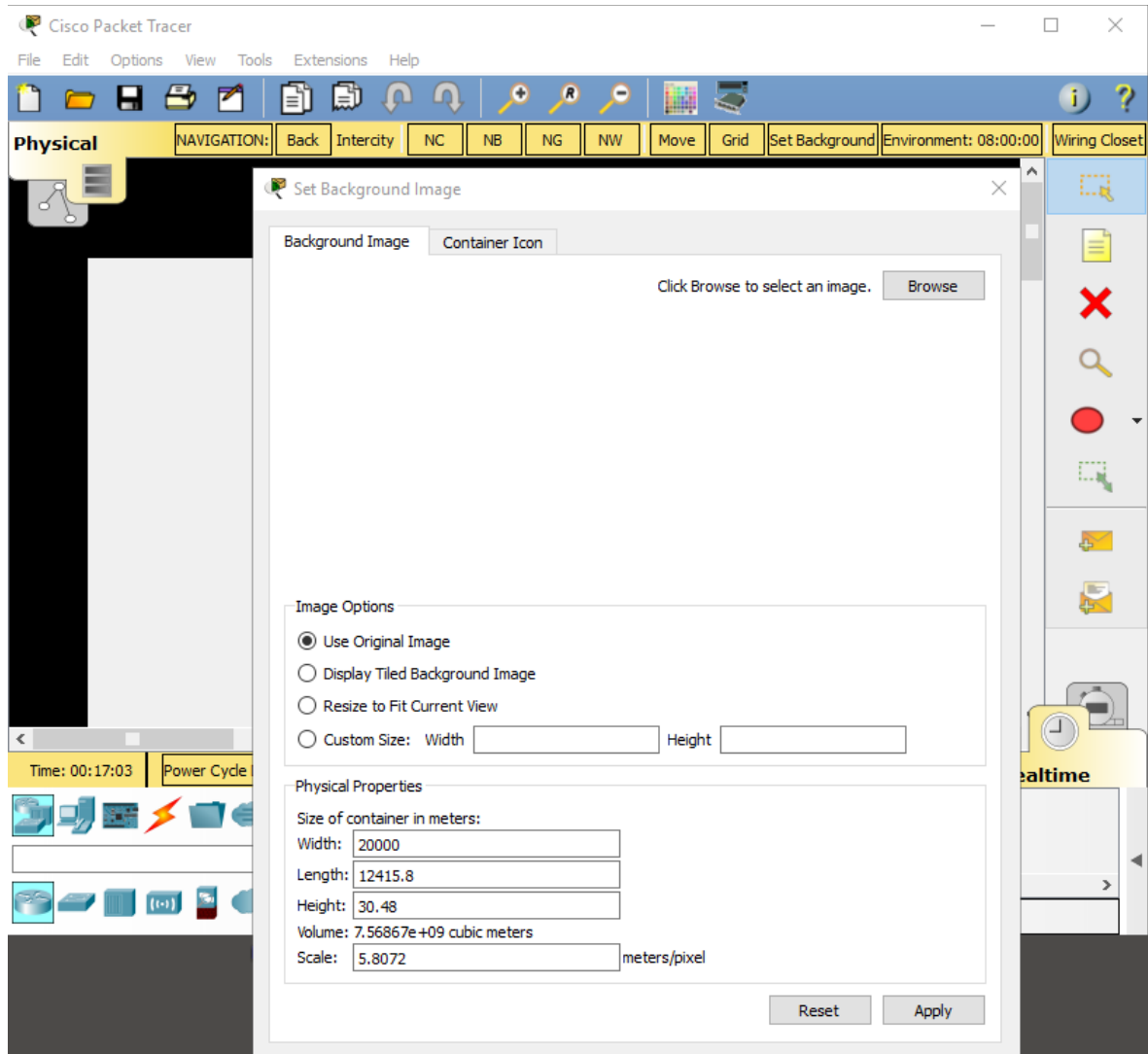
- b. Load the saved image into Packet Tracer.

Make sure that **Intercity** is selected in the Physical view tool bar.

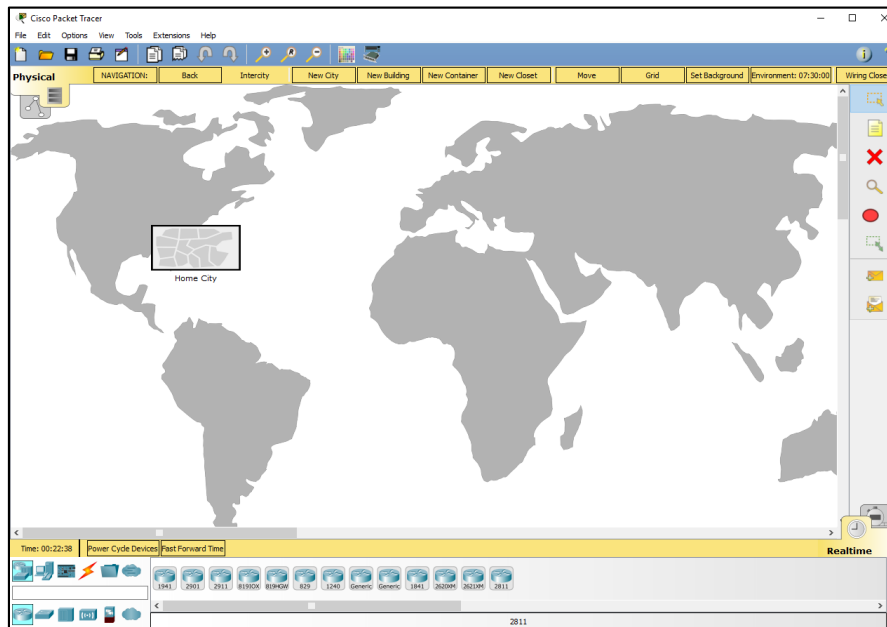


## Packet Tracer – The Physical View

Click **Set Background** at the top of the Packet Tracer window and in the Set Background Image window, click the **Browse** button to navigate to the saved image. Select the image and then click **Apply**. Close the Set Background Image window.



After you click Apply, the image is saved as the Physical view background.



### Step 3: Edit and Move Between Containers

- a. Relocate the Home City.

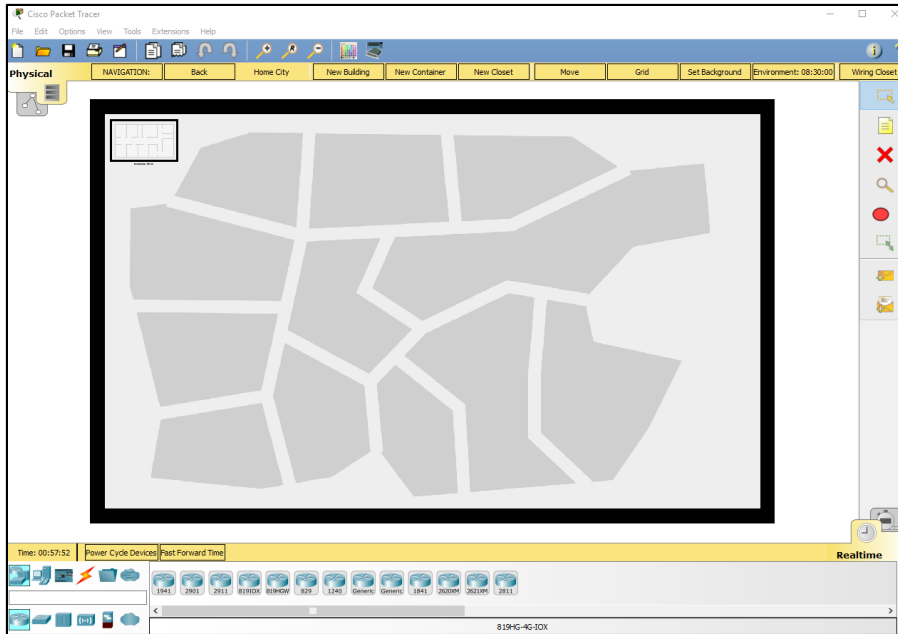
In the Intercity view is a Home City container. The Home City container can be moved to any location in the Physical view.

Click and drag the Home City container to any place on the world map background.

- b. Apply a background image to the Home City.

Click the Home City container. Notice that the view changes and what is on the workspace now is the default Home City background. Zoom out by clicking the magnifying glass with the minus sign so that the whole background is visible.

## Packet Tracer – The Physical View



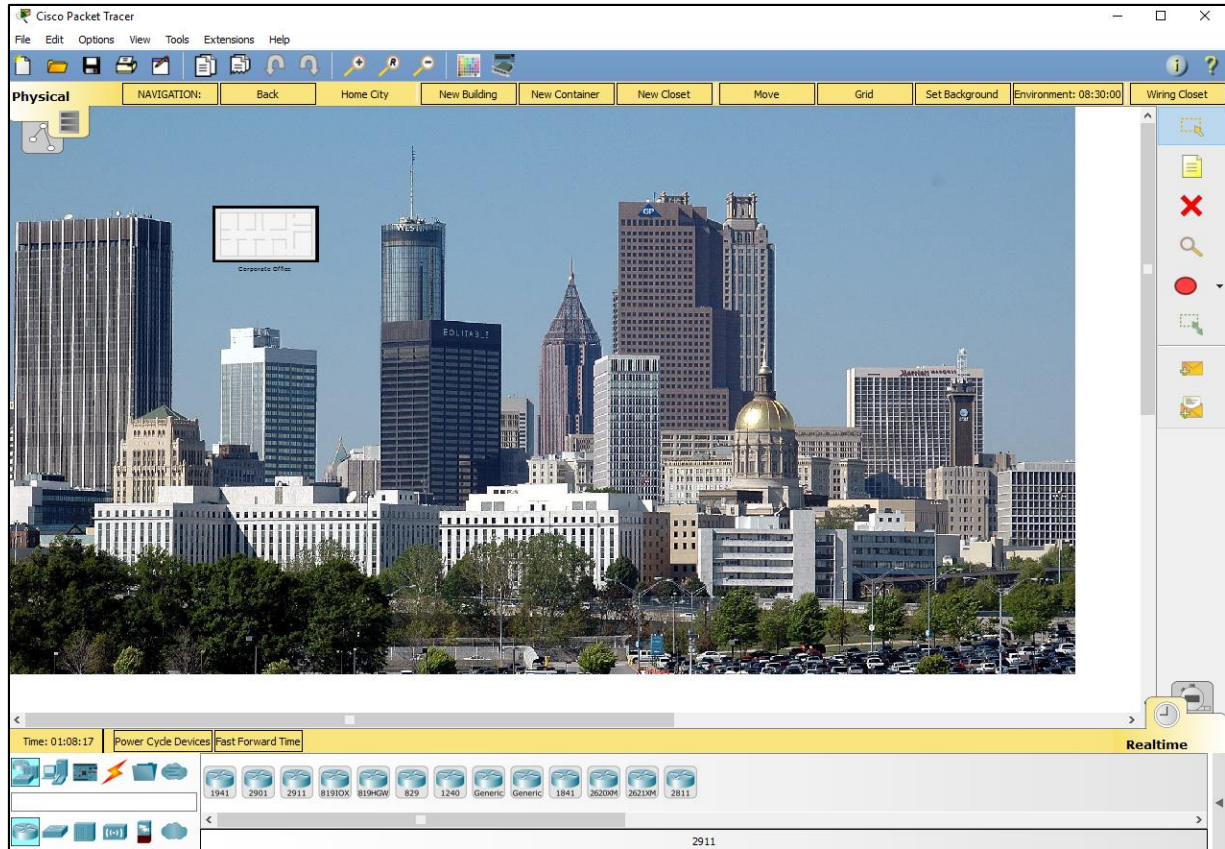
- c. Repeat Step 2 to download a city image from <https://pixabay.com> and apply it to the Home City background.

Navigate to the pixabay web site at <https://pixabay.com> and type **city image** into the All images search window. Click a map image in the result and save the image.

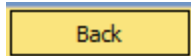
Click **Set Background** at the top of the Packet Tracer window and in the Set Background Image window, click the **Browse** button to navigate to the saved image. Select the image and then click **Apply**. Close the Set Background Image window.

You may need to zoom in and recenter the background so it is fully visible in the workspace.

## Packet Tracer – The Physical View

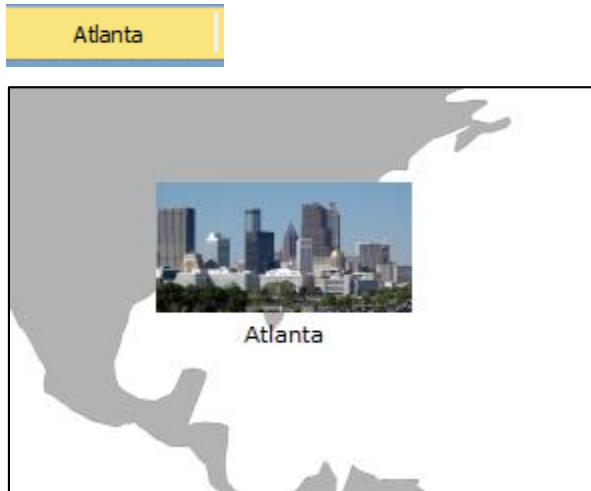


If you click the **Back** menu item in the Physical view tool bar, you can see that the city background you applied is also now used on the Home City container in the Intercity view.

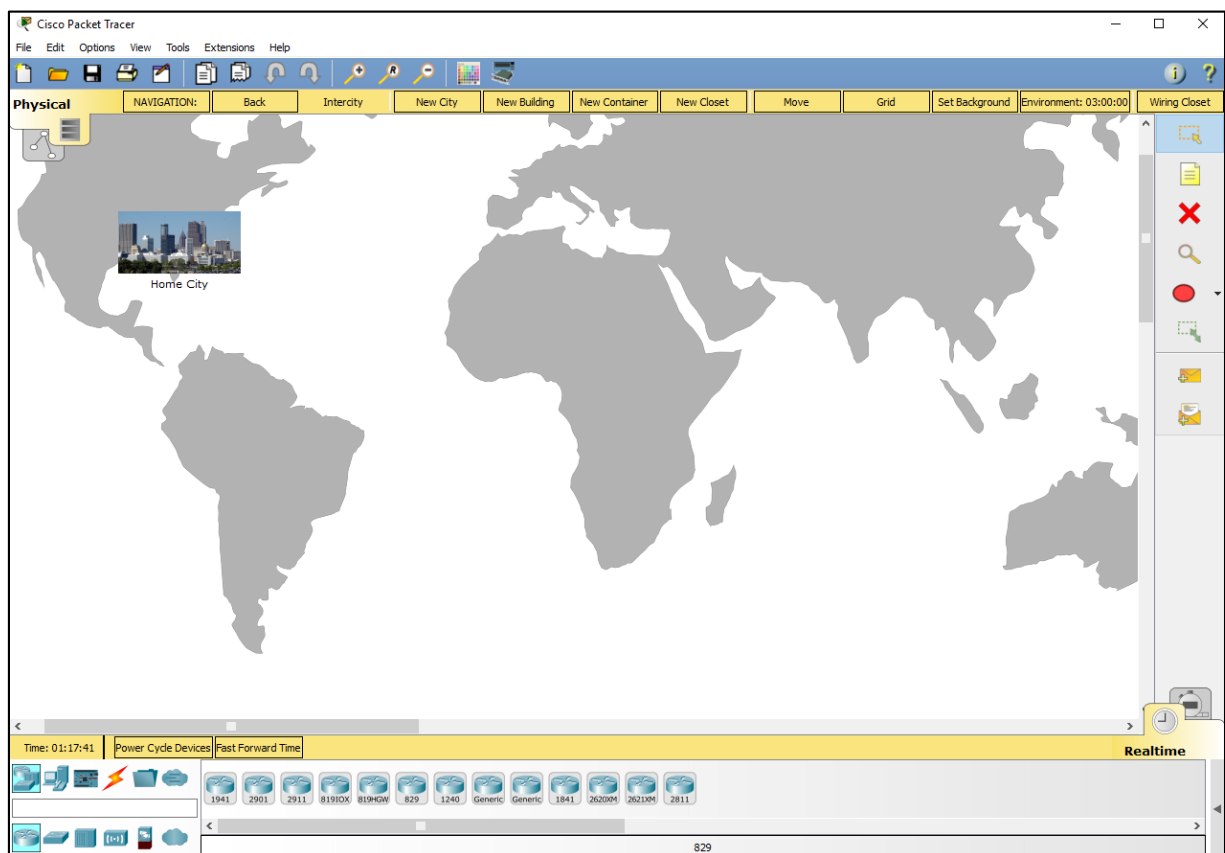


## Packet Tracer – The Physical View

Click the **Home City** text and change the name of the Home City container. In this example, the name is changed to Atlanta. This also changes the name of the Home City in the Physical view tool bar.



Click the **Home City** container to return to the Home City view.



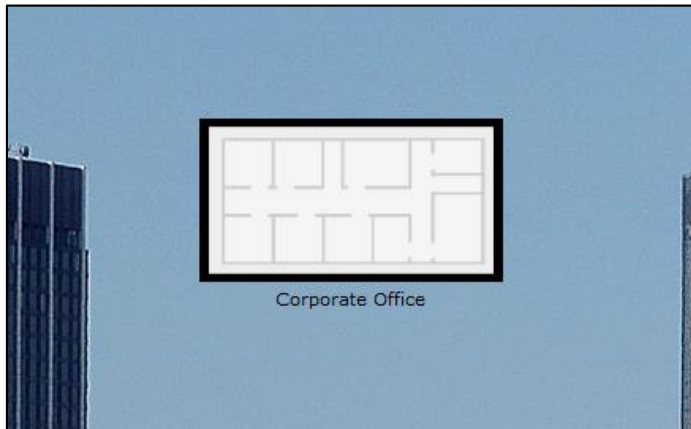
### Step 4: Add Devices to a Wiring Closet

- a. Enter the Corporate Office view.

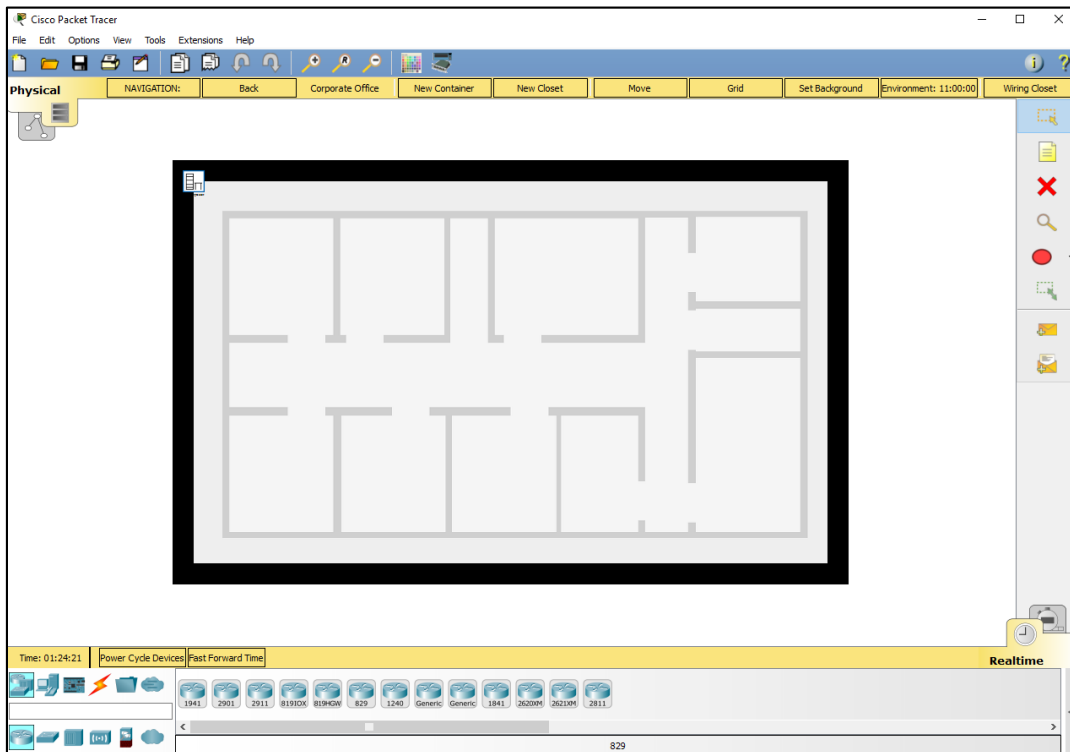


## Packet Tracer – The Physical View

There is a Corporate Office container on the Home City background.



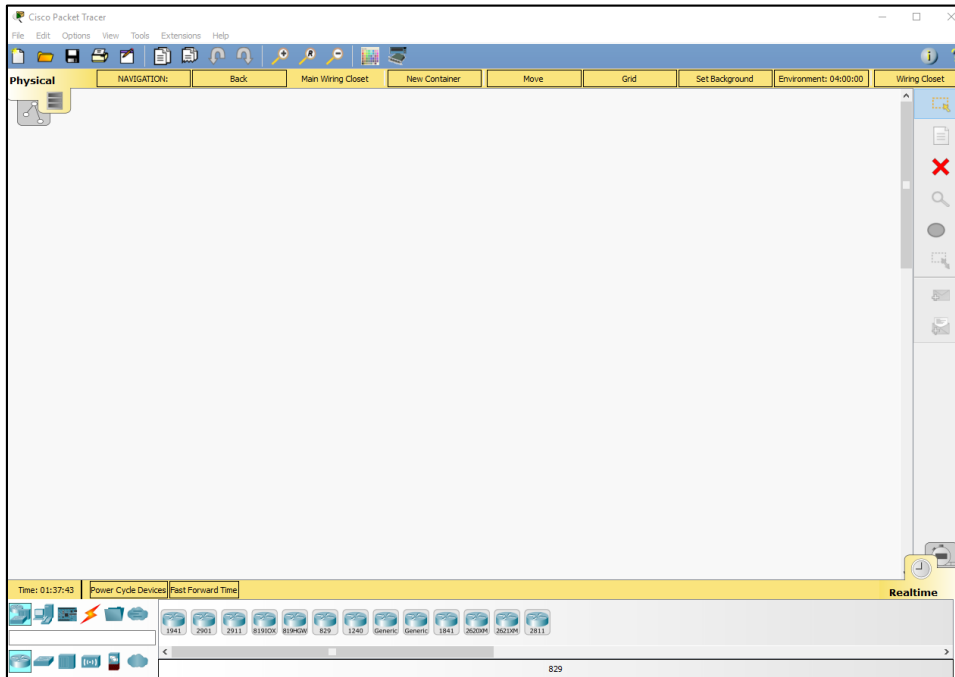
Click the Corporate Office container and zoom out so that the default corporate office background is visible.



The Corporate Office background includes another container called Main Wiring Closet. Click the **Main Wiring Closet** container.

## Packet Tracer – The Physical View

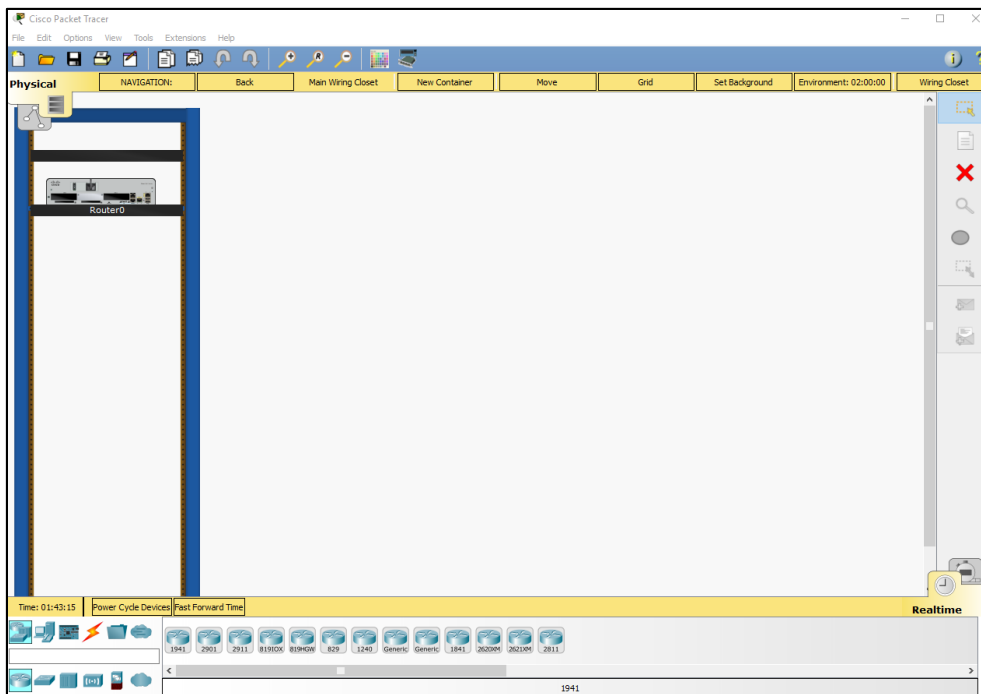
The Main Wiring Closet container has a blank workspace.



b. Add devices to the Main Wiring Closet.

In the Main Wiring Closet view, add a router to the workspace just as you would in the Logical view by clicking a router in the device window and then clicking the workspace.

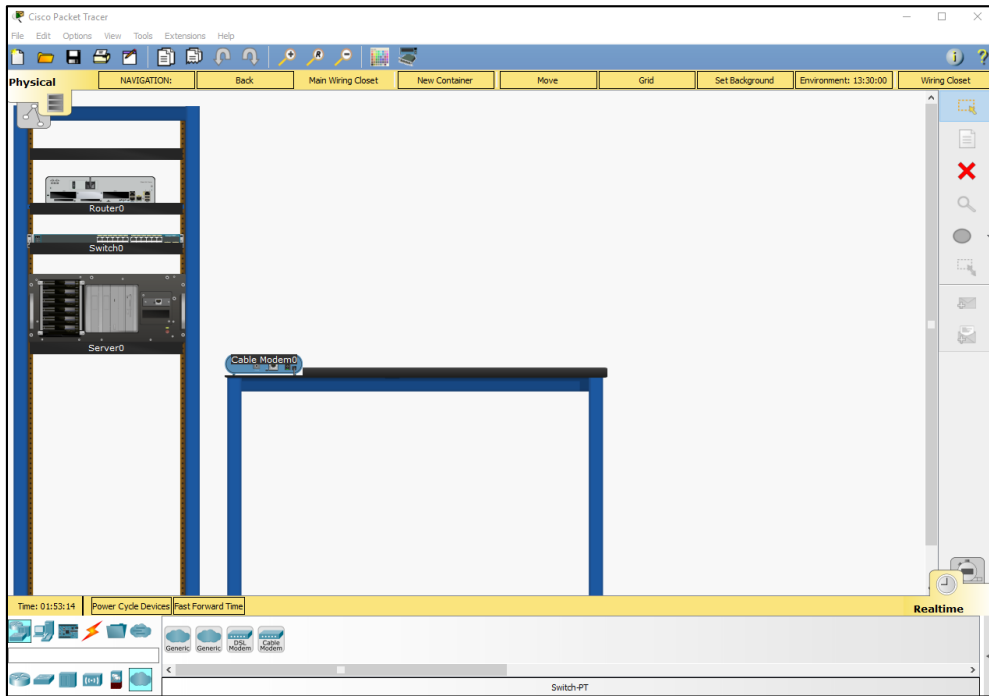
Because we are in Physical view, Packet Tracer shows a rack with the router installed in the rack.



## Packet Tracer – The Physical View

c. Add more devices to the wiring closet.

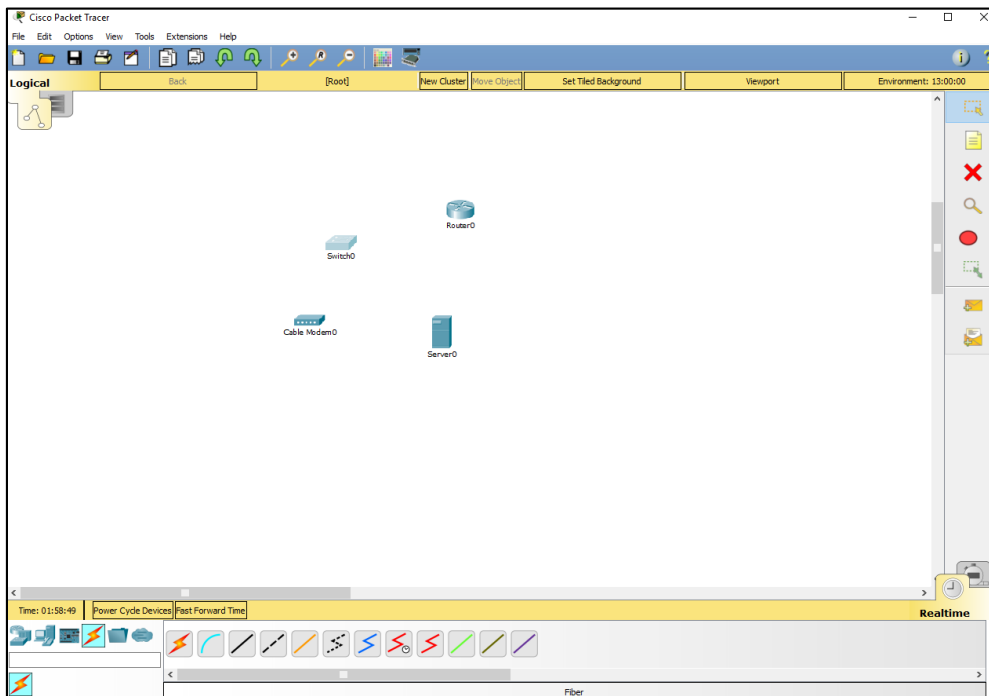
Add a network switch, a generic server, and a cable modem to the wiring closet.



b. Add cabling to the devices to the Main Wiring Closet.

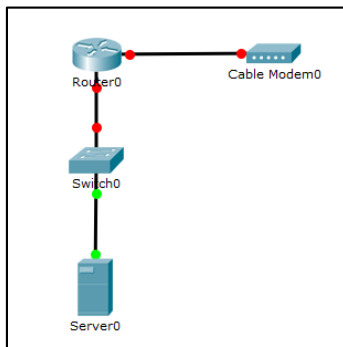
To add cabling to the devices, switch back to the Logical view in Packet Tracer. You may need to zoom in and re-center the workspace to see the devices.

The devices are randomly placed in the Logical view workspace.

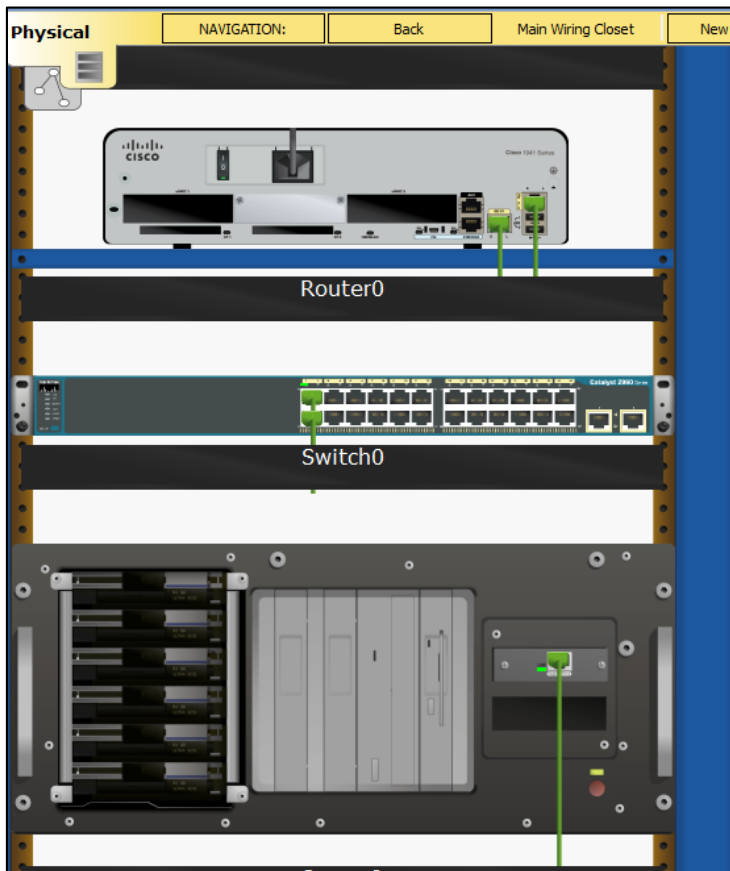


## Packet Tracer – The Physical View

Organize and connect the devices together using the appropriate cable types in the Logical view.



Switch back to the Physical view. You may need to zoom in. There are now physical cables connected to the interfaces of the devices.



Hover the mouse pointer over the cable ends to see information about each cable and interface.

### Step 5: Experiment

Now that you know how to navigate the Physical view and add containers and network devices, experiment by adding additional containers to your Home City and to your Corporate Office. Try building more complex network wiring closets by adding additional types of devices.