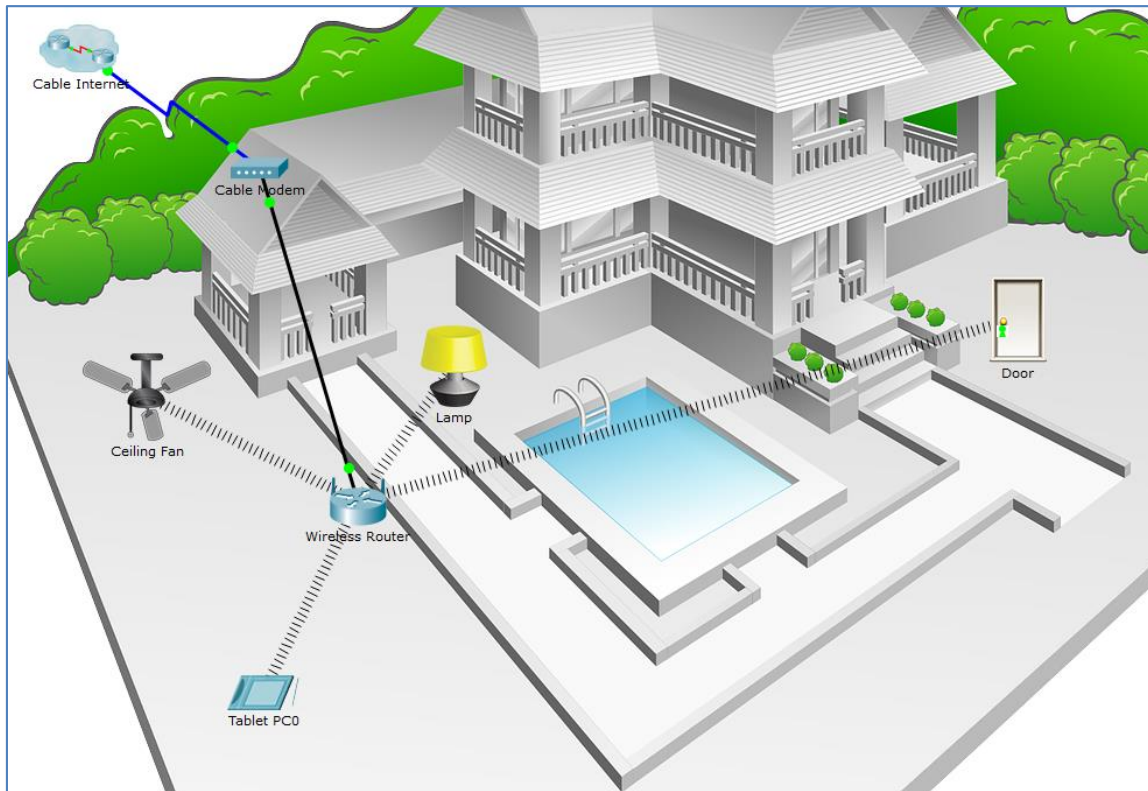


Packet Tracer – Connect IoT Devices to a Registration Server

The Smart Home Network



Objectives

Part 1: Add a Registration Server to the Network

Part 2: Register IoT Devices to the Registration Server

Background / Scenario

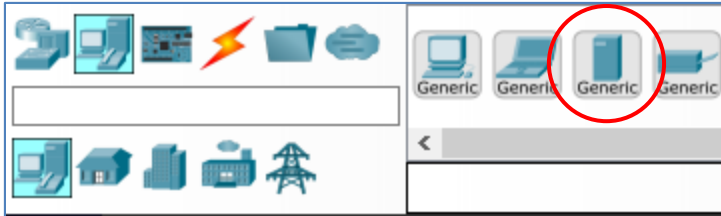
In this activity you will add a Registration Server and several IoT devices to an existing home network and monitor those devices through the Registration Server.

Part 1: Add a Registration Server to the Network

Step 1: Open the Registration_Server.pkt file and save the file to your computer

Step 2: Add a registration server on the network

- a. Place the Generic server onto the workspace and connect it to the home gateway.
Find the Generic server in the **End Devices Selection** box and drag it to the workspace.

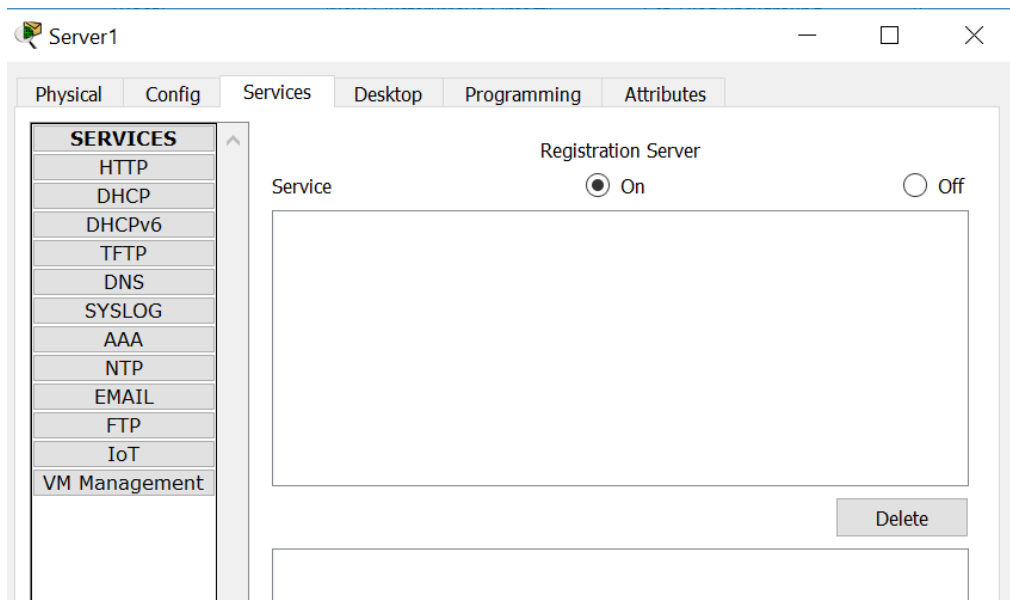


- b. Connect the server to the **Wireless Router**.

Using a **Copper Straight-Through** cable, connect the server to the **Wireless Router**.

- c. Enable the registration server service.

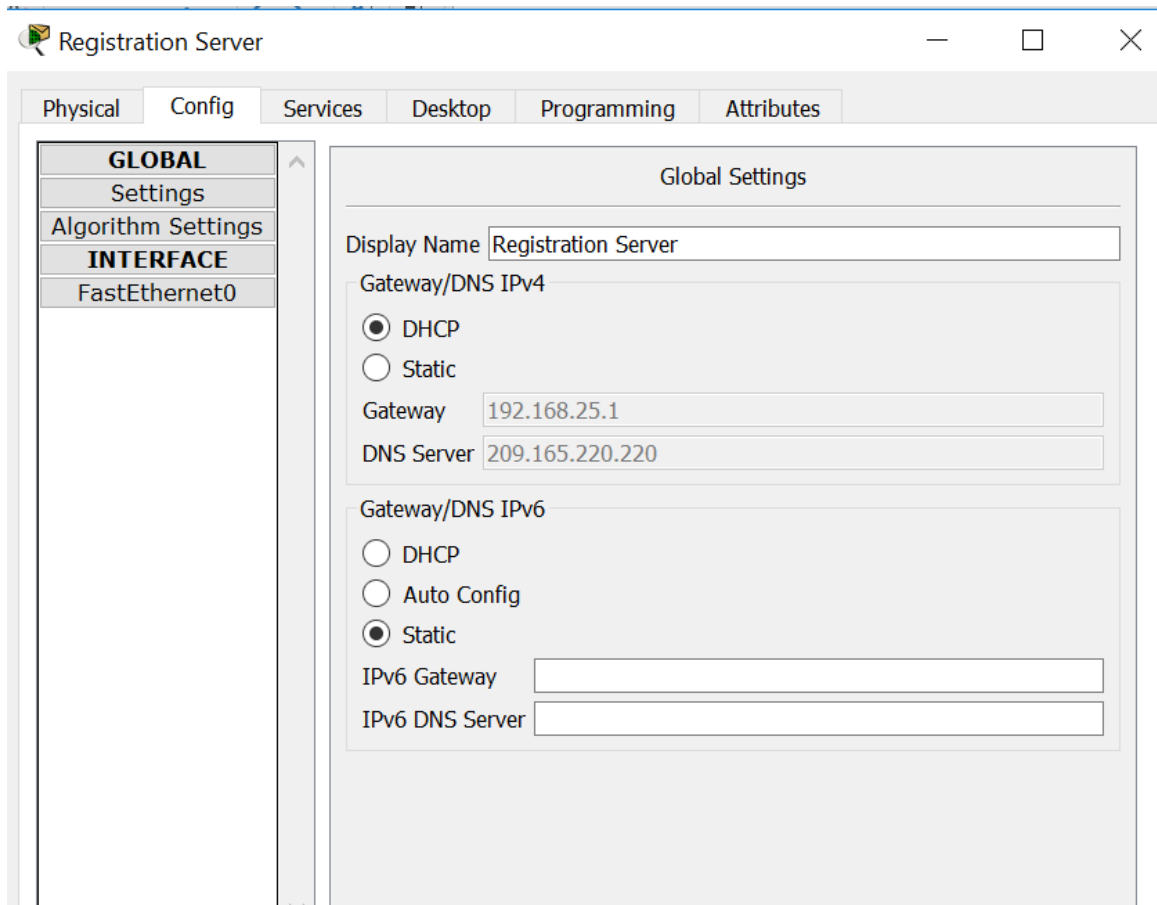
Click the **Registration Server** in the workspace to open the **Registration Server** configuration window. Click the **Services** tab and then click the **IoT** service in the left pane. Click the **On** button to enable the service.



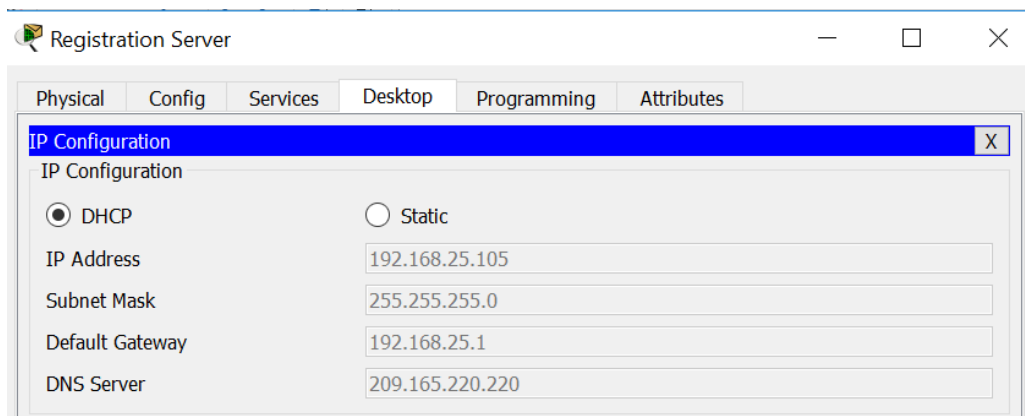
- d. Configure the registration server.

Click the **Config** tab. In the Global Settings window change the **Display Name** to **Registration Server** and change the **DHCP/DNS IPv4** setting from the default **Static** to **DHCP**.

Packet Tracer - Connect IoT Devices to Registration Server



Verify that the server has received an IPv4 address from the Home Gateway by clicking the **Desktop** tab and then the **IP Configuration** icon.



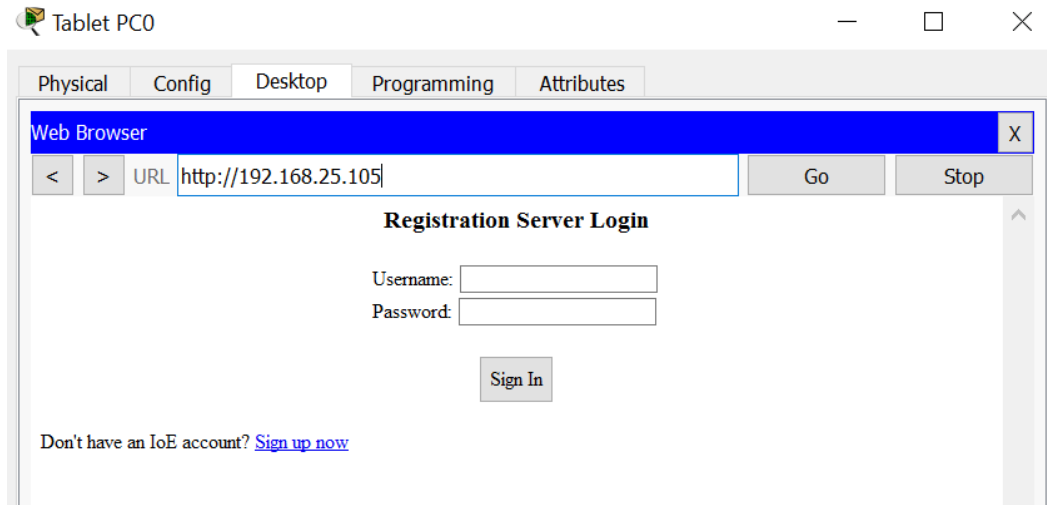
Note that, in this example, the IPv4 address assigned to the server is 192.168.25.105. Yours may be different.

Close the **Registration Server** window.

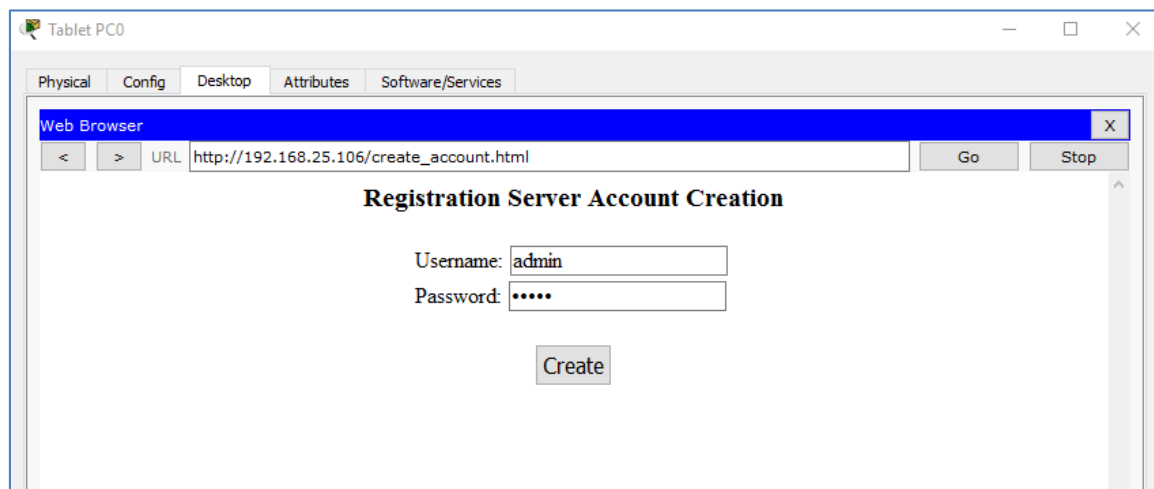
Part 2: Register Devices to the Registration Server

Step 1: Create registration server account

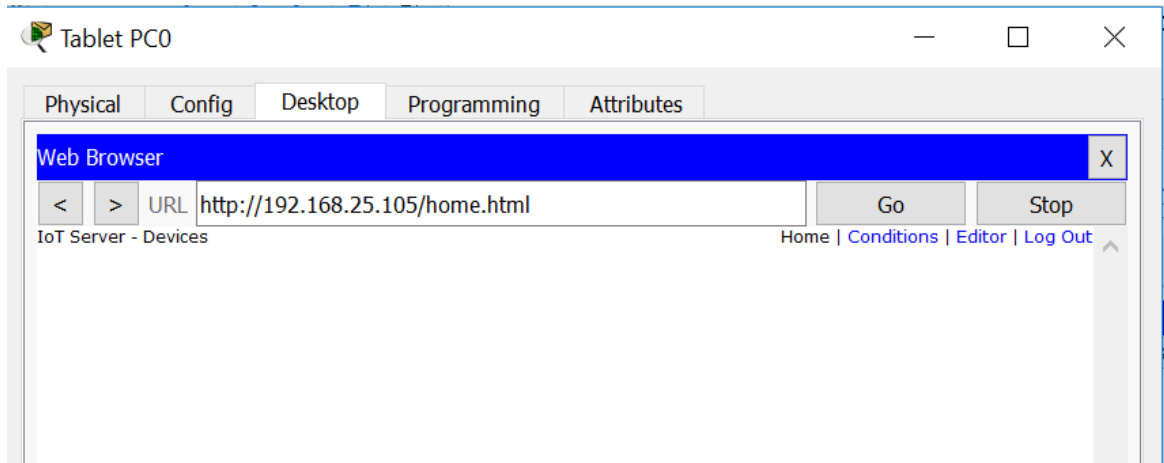
- a. Click the **Tablet** icon to open the **Tablet** configuration window. Click the **Web Browser** icon in the **Desktop** tab. Enter the IPv4 address of the Registration Server in the **URL** box and then click **Go**. Because there is no IoT account created yet, one will need to be created. Click the **Sign up now** option.



Select a **username** and **password** and then click **Create** to create the IoT account.



Notice in the **IoT Server – Devices** window there are no IoT devices listed. This is because all the devices are still registered with the Home Gateway.

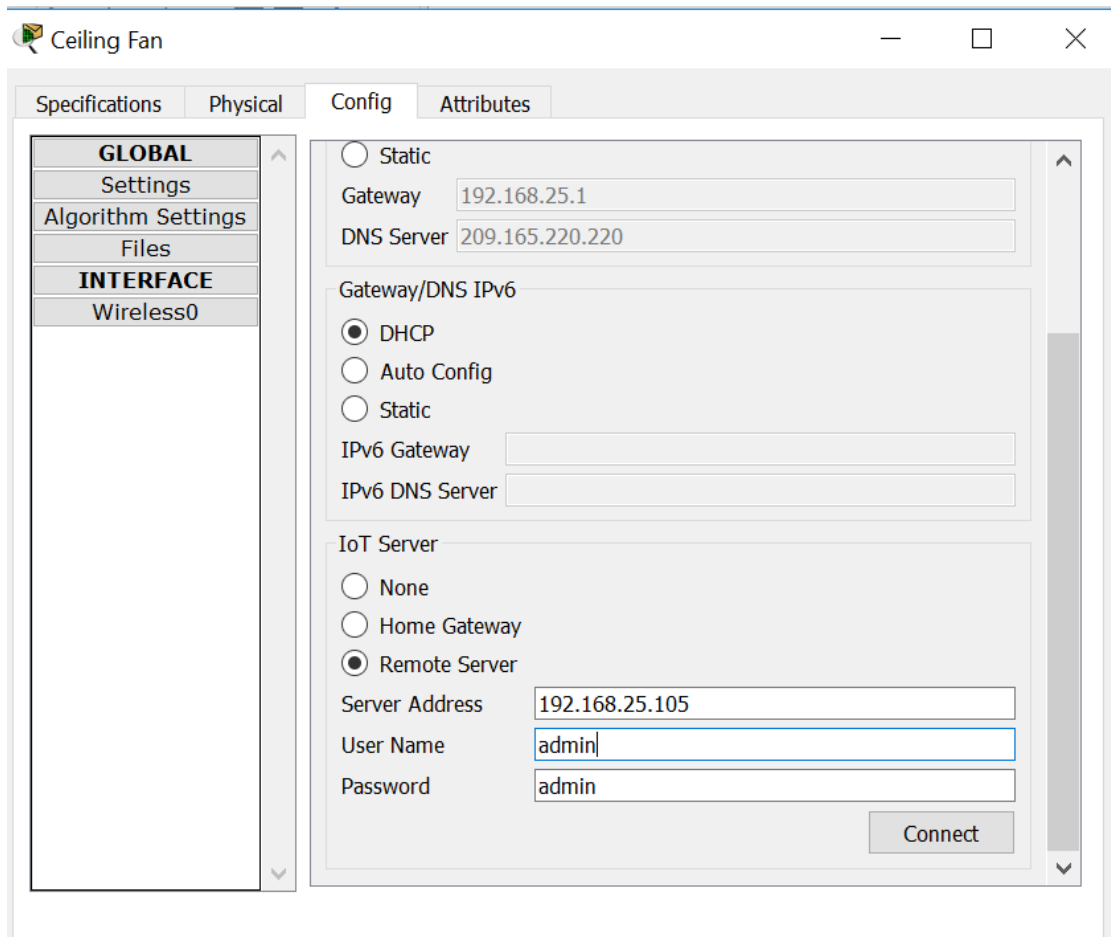


Close the Tablet PC window.

Step 2: Register IoT devices to the Registration Server

- a. Configure the Ceiling Fan to register with the Registration Server.

Click the **Ceiling Fan** icon in the workspace to open the device configuration window and then click the **Config** tab. Change the **IoT Server** type from **Home Gateway** to **Remote Server**. Enter the IP address of the Registration Server from Part 1, and the IoT account **Username** and **Password** created in Step 1 above. Next, click the **Connect** button.



Close the Ceiling Fan window.

- b. Configure the **Lamp** and the **Door** IoT devices to register with the Registration Server in the same manner.

Step 3: Verify IoT devices are registered to the Registration Server

Access the IoT Registration Server through the wireless Tablet Web browser using credentials from Step 1 above.

The three IoT devices, the Ceiling Fan, the Lamp, and the Door should now be registered with the IoT Server.

Close the Tablet PC window.

Packet Tracer - Connect IoT Devices to Registration Server

