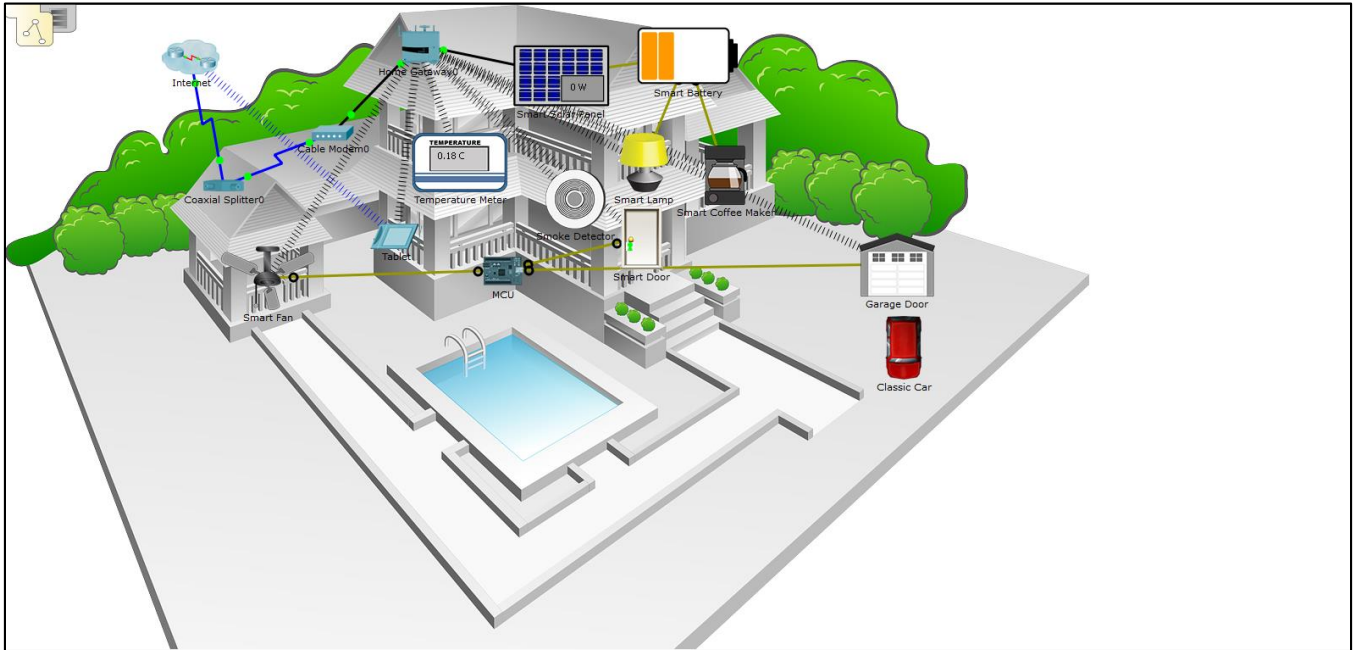


Packet Tracer – Modify and Monitor Environmental Controls in Packet Tracer

The Smart Home Network



Objectives

Part 1: Explore Environmental Controls

Part 2: Edit Environment Elements

Background / Scenario

In this activity you will use the Physical view in Packet Tracer to view and edit the environmental controls.

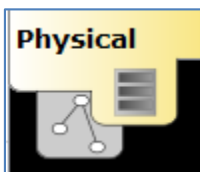
Part 1: Explore Environmental Controls

Step 1: Open the PT Environmental Controls.pkt file and save the file to your computer

Step 2: View the current environment values

- a. Change to the **Physical** view in Packet Tracer.

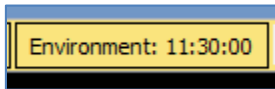
Click on the **Physical** icon in the top left corner of the Packet Tracer workspace.



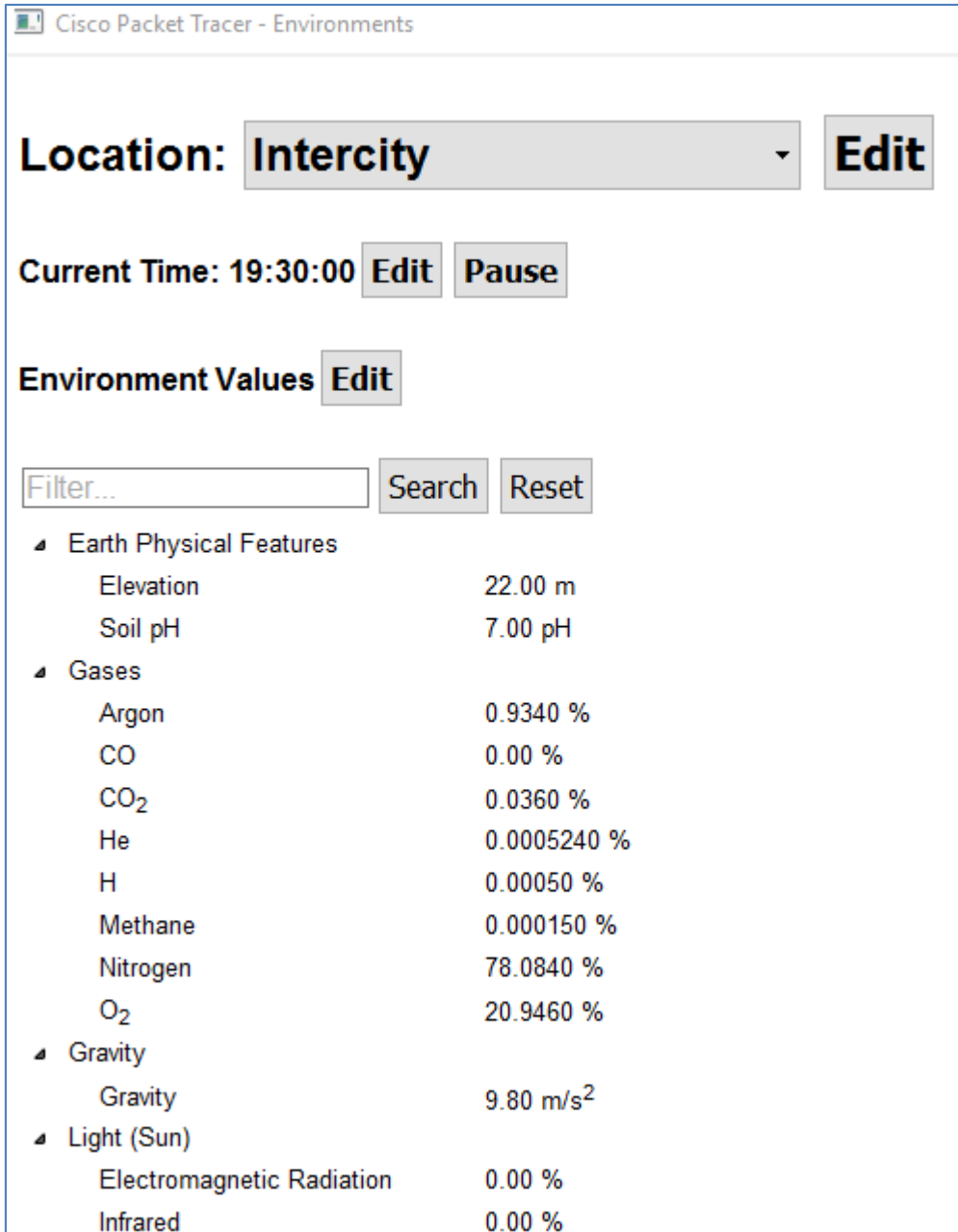
- b. Open the Environments window.

Packet Tracer – Modify and Monitor Environmental Controls

Click on the **Environment** button in the Packet Tracer Physical view menu bar



- c. Explore the many environmental elements in the Intercity location.



The screenshot shows the Cisco Packet Tracer - Environments interface. At the top, the location is set to "Intercity" with an "Edit" button. Below this, the current time is "19:30:00" with "Edit" and "Pause" buttons. The "Environment Values" section is expanded, showing a list of environmental parameters and their values. A search filter is available at the top of the list.

Category	Parameter	Value
Earth Physical Features	Elevation	22.00 m
	Soil pH	7.00 pH
Gases	Argon	0.9340 %
	CO	0.00 %
	CO ₂	0.0360 %
	He	0.0005240 %
	H	0.00050 %
	Methane	0.000150 %
	Nitrogen	78.0840 %
	O ₂	20.9460 %
Gravity	Gravity	9.80 m/s ²
Light (Sun)	Electromagnetic Radiation	0.00 %
	Infrared	0.00 %

- d. Observe ambient temperature chart.

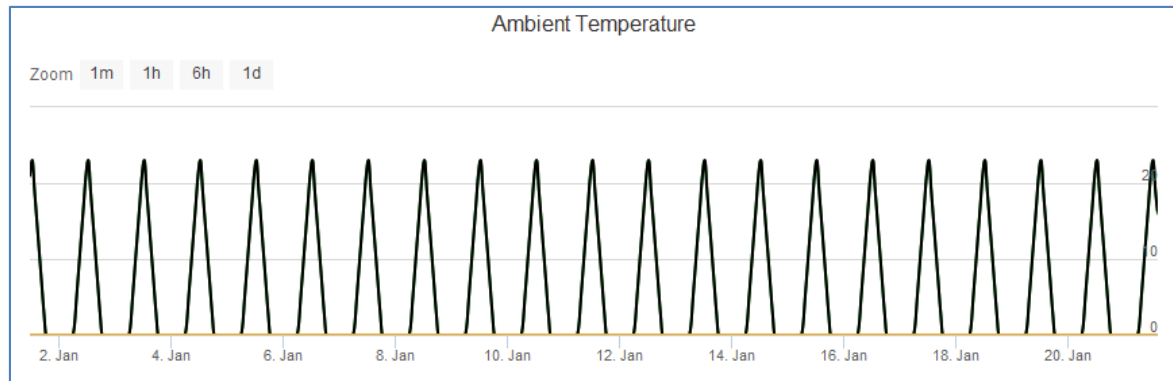
Packet Tracer – Modify and Monitor Environmental Controls

Scroll down the **Environments** window to the **Temperature** element and notice the Ambient Temperature changes in degrees Celsius through the simulated 24 hour day period.



Click on the **Ambient Temperature** element to open the **Ambient Temperature** chart. Keep the Environments window open for a few of minutes to simulate several simulated days in the Packet Tracer environment.

Notice that after a few minutes the chart shows the temperature fluctuations over time.



- e. Experiment with other environmental elements.

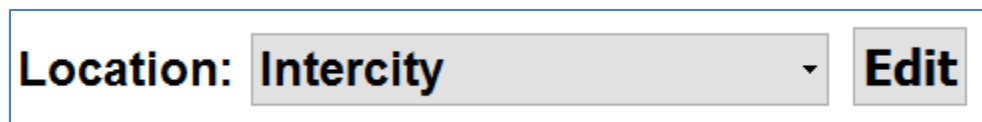
Click on other environmental elements and observe their charts over time.

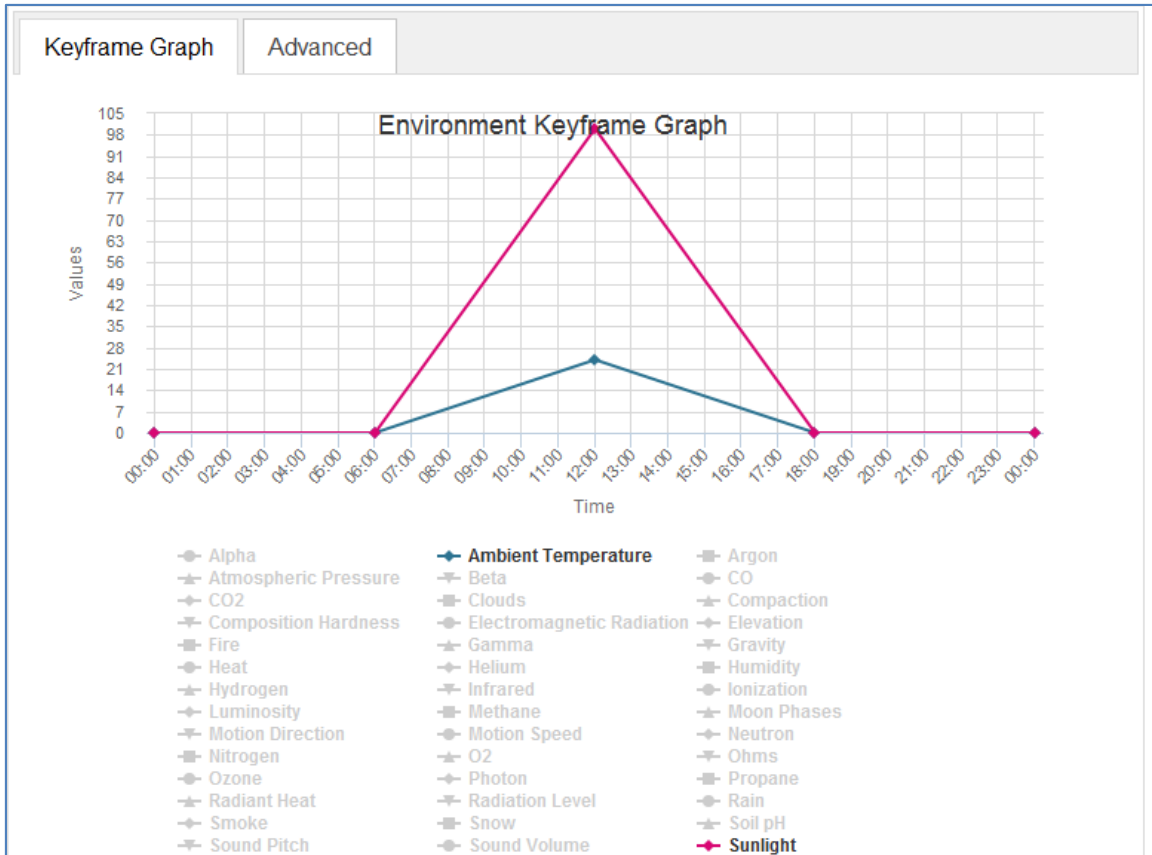
Do not close the Environments window. We will use it in part 2.

Part 2: Edit Environmental Elements

Step 1: Change to environment edit mode

- a. Click on the **Edit** button for the **Intercity** location





Step 2: Edit the Ambient Temperature

- b. Note current Ambient Temperature setting

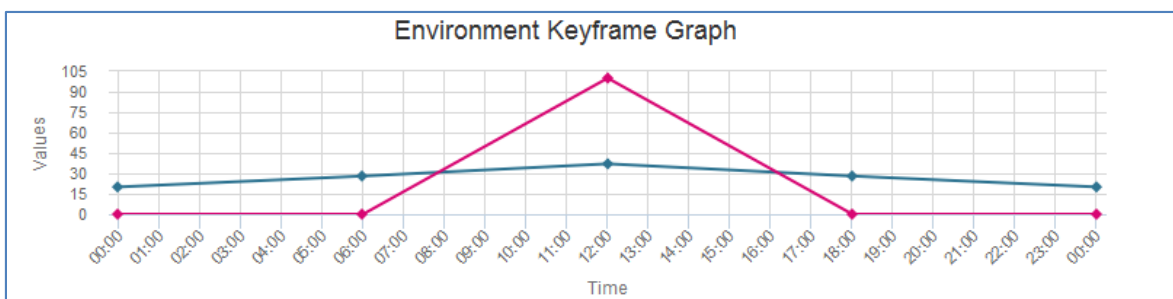
The Environment Keyframe Graph for the ambient temperature shows degrees Celsius starting at low of zero degrees at midnight and a high of 24 degrees at midday.

- c. Change the **Ambient Temperature** for the Intercity.

Using the Environment Keyframe Graph change the Ambient Temperature for the 24 hour day by clicking on the blue Ambient Temperature line and dragging it up the graph.

To simulate a summer environment make the following changes.

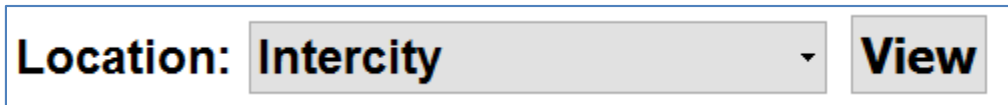
Drag the beginning and end temperatures to 20 degrees, the 06:00 and 18:00 temperatures to 28 degrees and the mid-day temperature to 37 degrees.



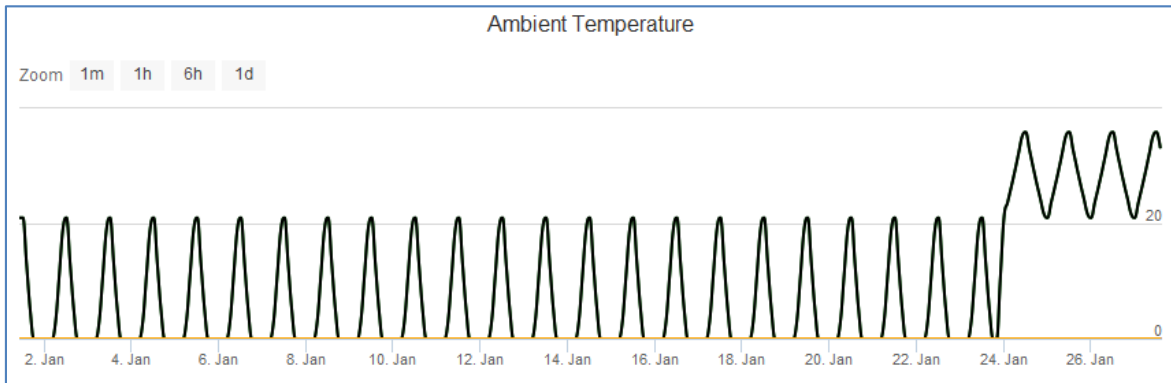
Step 3: Observe changes in the environment

- Return to Environment View mode

Click the **View** button for the **Intercity** location



Note that the Ambient Temperature chart is now showing the temperature increase.



Close the Environments window.