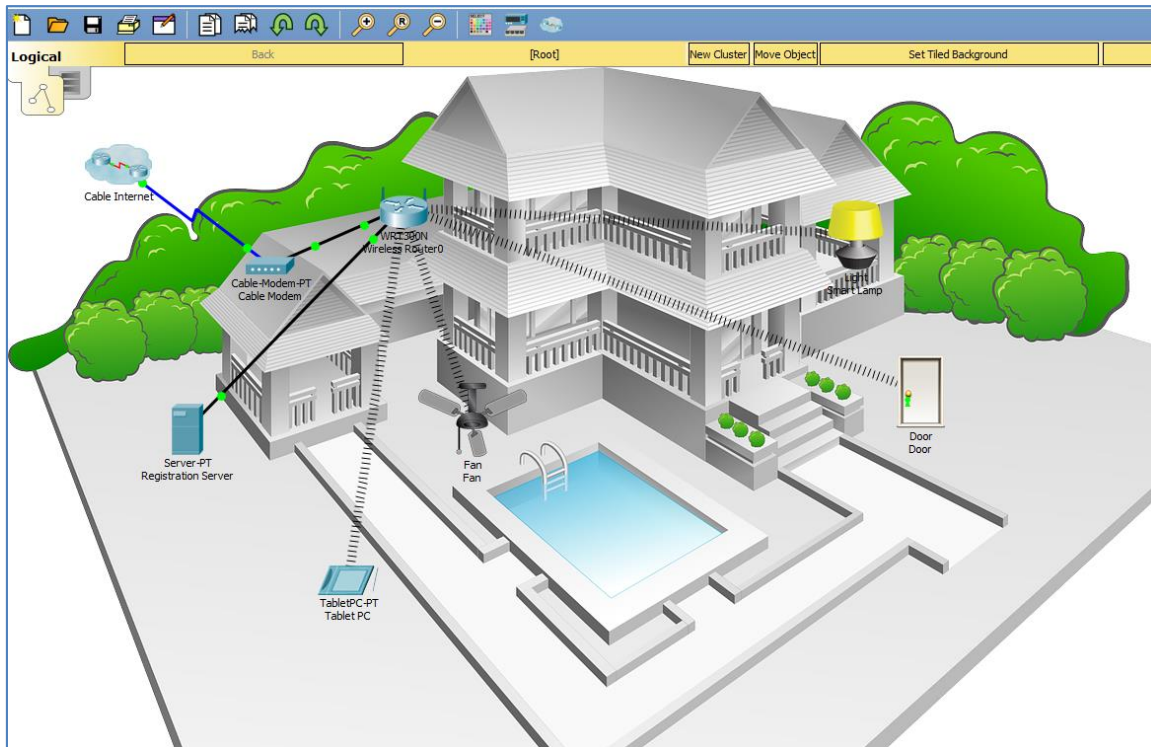


Packet Tracer – Create Your Own Thing

The Smart Home Network



Objectives

Part 1: Create Your Own Thing

Part 2: Save Your New Thing

Background / Scenario

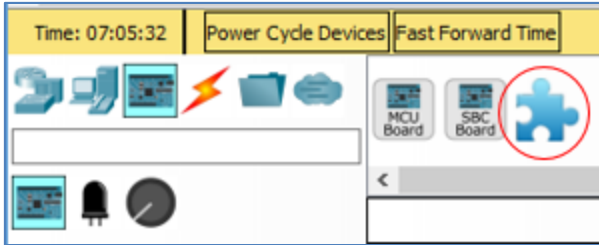
In this activity you will create a new IoT Thing, a security camera, and save the new Thing in Packet Tracer.

Part 1: Create Your Own Thing

Step 1: Open the Create Your Own Thing.pkt file and save the file to your computer.

Step 2: Add a new device to the workspace.

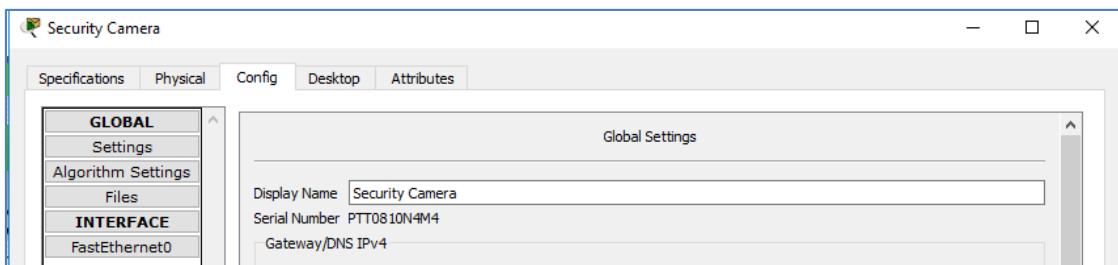
- a. Select the **Thing** component from the device selection box.



- b. Change the display name of the device.

Click on the Thing in the Packet Tracer workspace to open the device configuration window.

Click on the **Config** tab and then click on the **Global Settings** in the left side pane. Change the **Display Name** of the device to Security Camera.



Step 3: Change the device properties and icon.

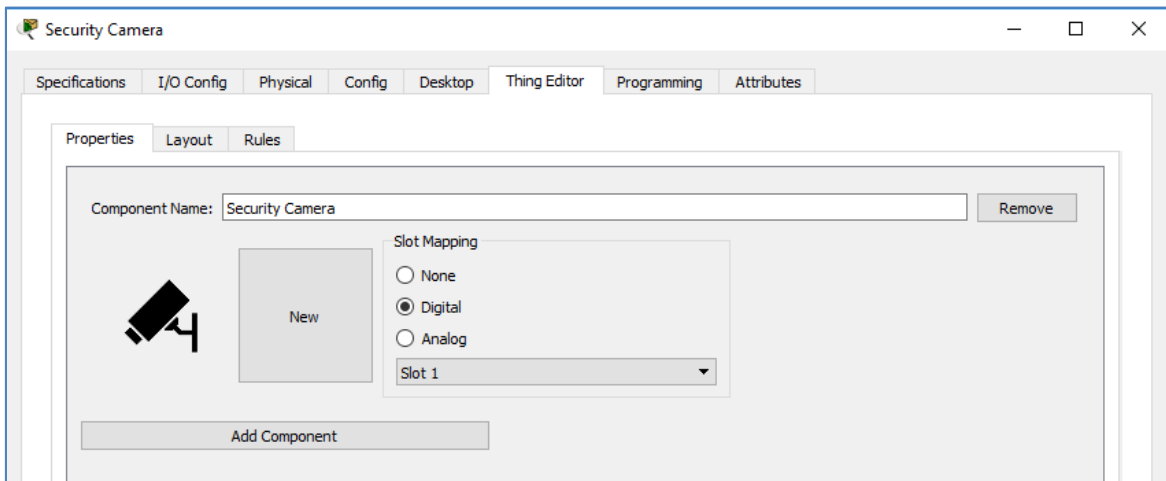
Click on **Advanced** button in the bottom right of the device configuration window, then click on **Thing Editor** Tab, and then the **Properties** tab.

Change **Component Name** to Security Camera.

Change **Slot Mapping** to **Digital** and **Slot Number** to **1**.

To add icon graphic, click the **New** button.

The Choose Image window will open allowing you to browse for a new icon. You can download a picture or graphic of a security camera from the Internet then browse to that directory to add it as a new icon.

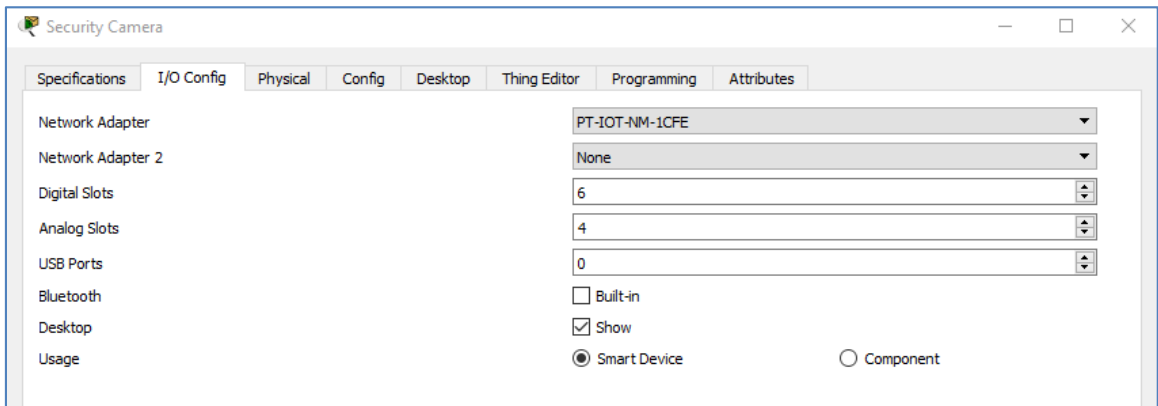


Step 4: Add the security camera to the network.

- a. Add a network adapter to the security camera.

Click on the **Advanced** button and then click on the **I/O Config** tab.

In the **I/O Config** window change the **Network Adapter** dropdown menu to the PT-IOT-NM-1CFE adapter. This is a copper FastEthernet cable adapter. (alternatively the wireless adapter PT-IOT-NM-1W could be used to add the camera to the wireless network).

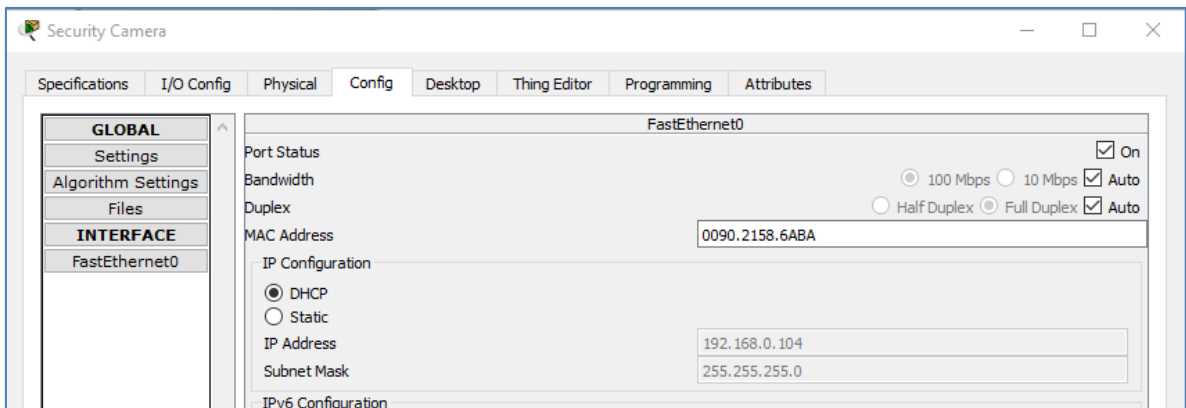


- b. Attach the security camera to the wired network.

Add a Copper straight through cable from **Connections** selection box from the camera FastEthernet port to an available Ethernet port on the Wireless router.

- c. Configure the security camera for DHCP.

Click on the **Config** tab and then click on the change the FastEthernet0 interface in the left side pane. Change the **IP Configuration** to **DHCP**.



Close the security camera configuration window.

Part 2: Save the New Device

Step 1: Save the security camera as a Packet Tracer template.

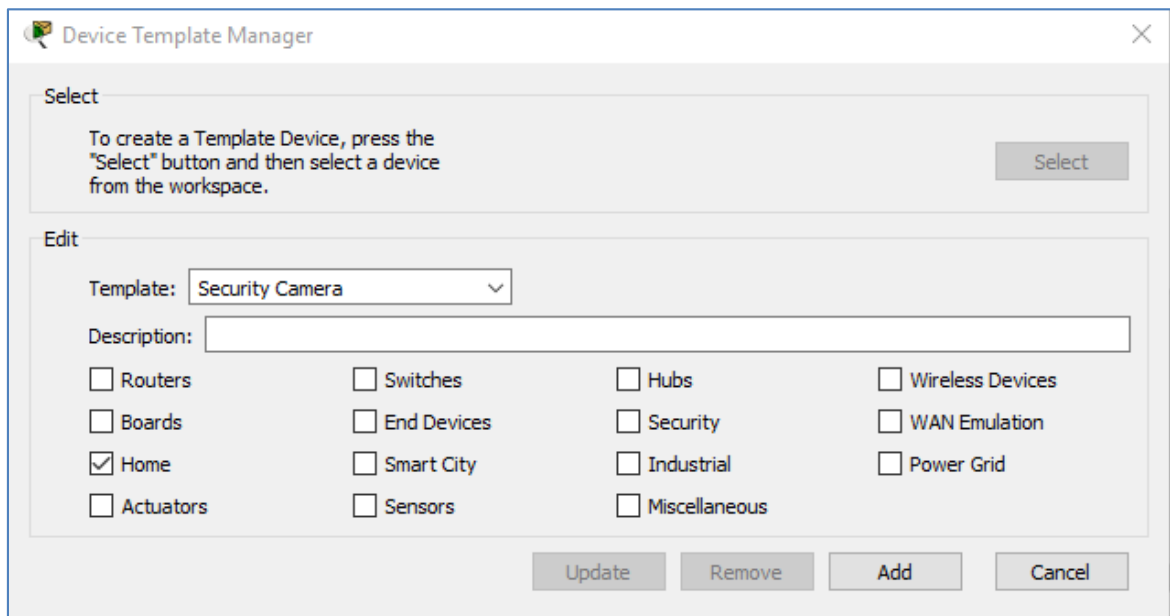
- a. Save the security camera using the Device Template Manager.

Click on **Tools** in the Packet Tracer menu and select **Custom Device Dialog** in drop menu.

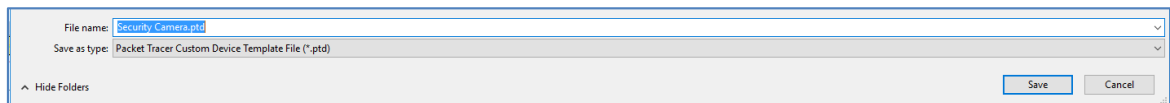
In the **Device Template Manager** window click on the **Select** button.

The **Device Template Manager** window will disappear and then click on the Security Camera in the workspace which will bring the **Device Template Manager** window. Make sure the **Template** name is set to Security Camera.

Choose a Packet Tracer template area by checking the **Home** checkbox.



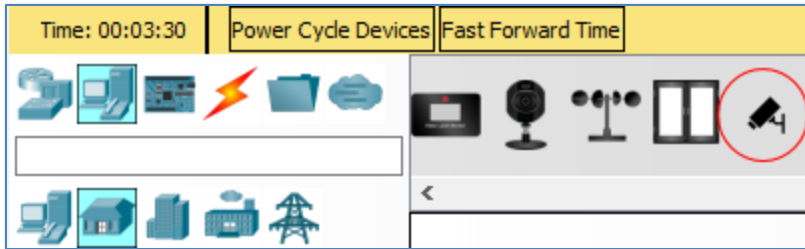
Click **Add** in the bottom right of the **Device Template Manager** window. The **Save File in Template Folder** window opens. Keep the default file name of Security Camera and click **Save**.



Step 2: Verify the security device is saved as a Packet Tracer template.

- a. Save your file and close Packet Tracer.
- b. Open Packet Tracer.

Then security camera should now be in the list of **Home** devices in the **Device Selection Box**.



Step 3: Save the Packet Tracer file and close Packet Tracer.